



PRIMA

PARTNERSHIP FOR RESEARCH AND INNOVATION
IN THE MEDITERRANEAN AREA

INFO day
Barcelona - Spain
December 4 ,2018

Omar Amawi, PRIMA foundation Deputy Director



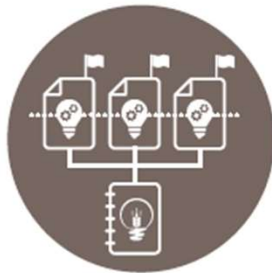
PRIMA; Challenges, Success and Impact

Challenges in the Mediterranean Area:

- Climate change
- Population growth and food security issues
- Water scarcity and overexploitation of natural resources
- Unsustainable agricultural practices
- Agro-biodiversity loss
- Lack of innovation in Mediterranean agro-food value chains



How to address these challenges?



ALIGNMENT OF NATIONAL R&I PROGRAMMES

Orientation of relevant national research and innovation programmes towards the implementation of the strategic agenda.



CRITICAL MASS OF ACTORS AND RESOURCES

Involvement of all relevant public and private sector actors in implementing the strategic agenda by pooling knowledge and financial resources to achieve the necessary critical mass.



STRENGTHENING R&I CAPACITIES

Strengthening of the research and innovation funding capacities and of the implementation capabilities of all actors involved including SMEs, academia, non-governmental organisations and local research centres.



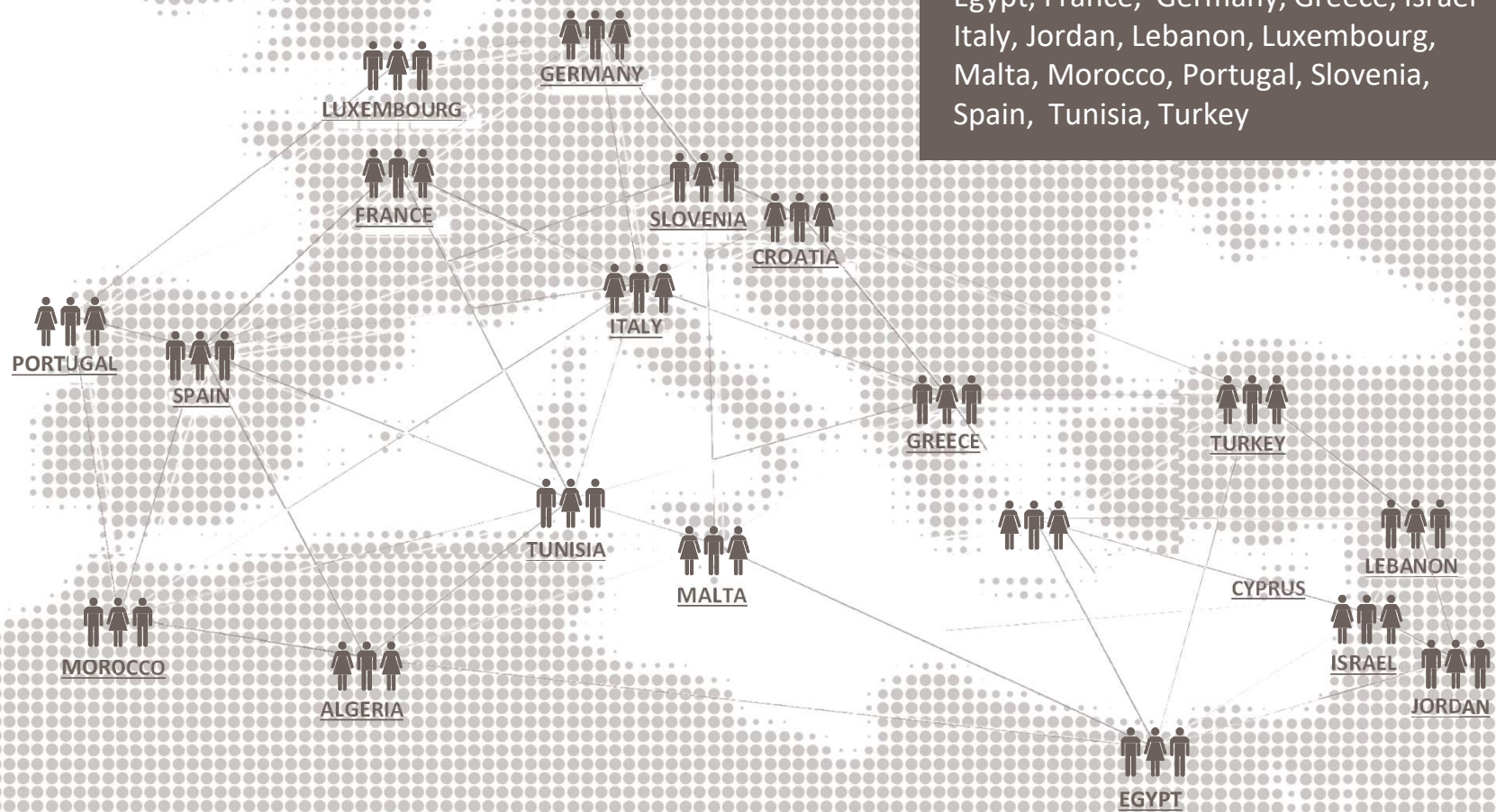
PRIMA Main Features

An article 185 initiative as the most suitable instrument to tackle global challenges of the Med region in an integrated way

- Equal footing
- Long-term commitment and orientation
- Avoiding fragmentation and duplications in R&I
- Focused on Research, Innovation and Adoption of innovation solutions
- Definition of a common and MED-wide 10-year Strategic Research and Innovation Agenda (2018-2028)
- Institutional relationships with MED stakeholders (end users, communities, enterprises, governments)



PRIMA can currently count on the participation of **19 Participating States**, including: Algeria, Cyprus, Croatia, Egypt, France, Germany, Greece, Israel, Italy, Jordan, Lebanon, Luxembourg, Malta, Morocco, Portugal, Slovenia, Spain, Tunisia, Turkey



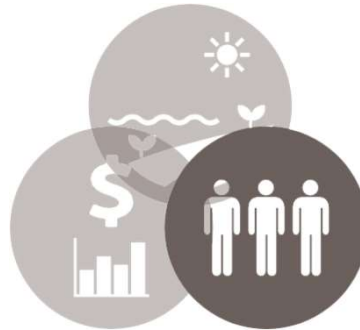
PRIMA impacts

Economic Impacts



- ✓ Increase in production and efficiency;
- Access to new markets;;
- ✓ Large-scale aggregate economic impacts.

Social Impacts



- ✓ Political stability and reduced migration.

Environmental Impacts



- ✓ Biodiversity conservation;
- ✓ Sustainable farming practices.

PRIMA Website

On the website you will also find all relevant updates, documents and information on the programme, including.

CALL SECTION

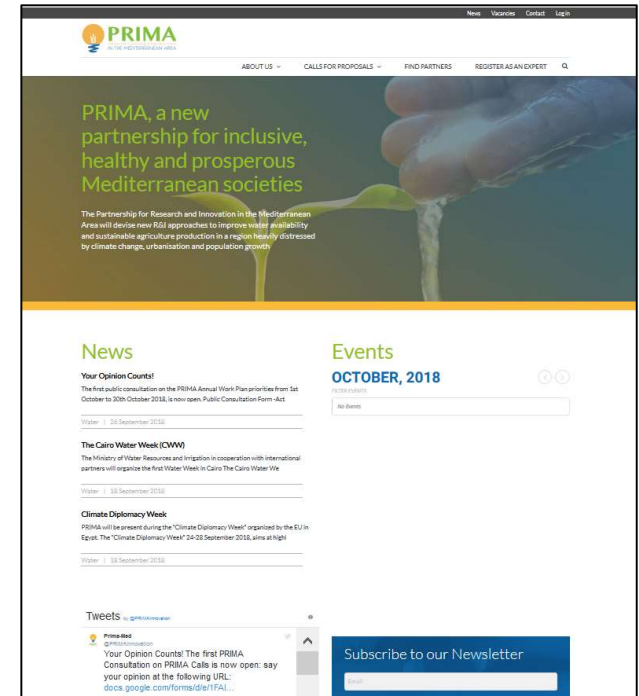
- Information and guidelines for each call
- Templates
- Link to submission website (one link per call)

PARTNERING TOOL

Applicants can post and read offers to look for partners

EXPERT REGISTRATION TOOL

To register as expert to take part in the evaluation of the proposals submitted to PRIMA calls



<http://prima-med.org/>



PRIMA

PARTNERSHIP FOR RESEARCH AND INNOVATION
IN THE MEDITERRANEAN AREA

Thank you for your attention

Email:

Website: <http://prima-med.org/>

FOLLOW US



Omar Amawi

Deputy Director

omar.amawi@prima-med.org