

# Workshop | Promoting Gender Equality in R&I Projects to Drive the Mediterranean's Green Transition



6<sup>th</sup> June | 9h30 CET | Online event

*NEXUS-NESS Ecosystem Labs: Participatory Gender dimension implementation for achieving sustainable, safe and inclusive resource management*

*Fernando Nardi*



5 - 6

June

23

3-11 June 2023

**#EUGreenWeek  
PARTNER EVENT**

Presented by



Organized by





## NEXUS Ecosystem Labs (NELs)



NEXUS-NESS will develop with stakeholders a **Nexus-Ness Service to co-validate WEF E Nexus strategies** for fair access to resources and risk mitigation in **four Nexus Ecosystem Living Labs**

**NEXUS-NESS NELs** are supported by the **RRI Roadmap**, a **Multi-Stakeholder User Platform** and a **WEFE Nexus forum** for co-demonstration and promotion of the solution in the **Euro-Med area**





# From As-It-Is towards At-It-Should be

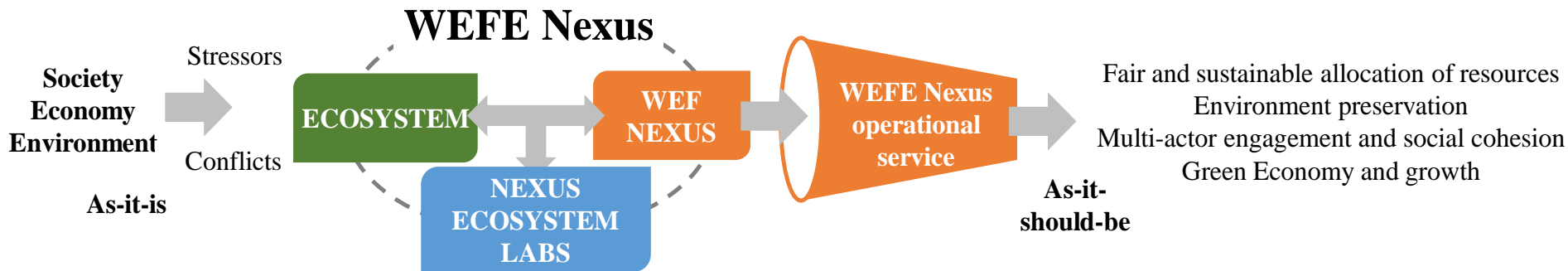
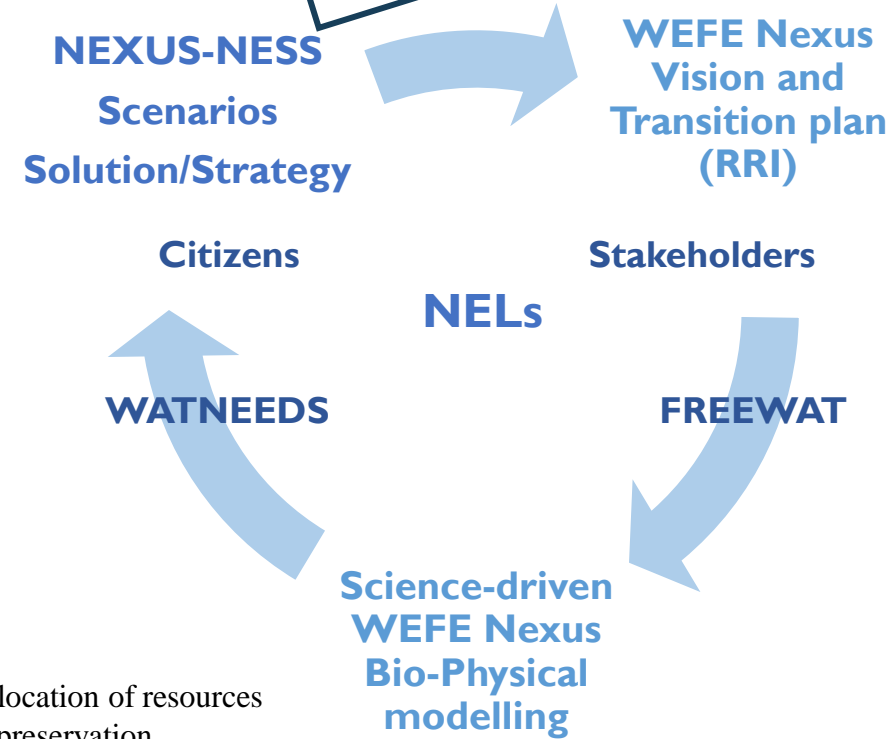
12 NEL Grand Challenges

Knowledge & Awareness

Indicators / Scenarios

Operational WEF Nexus management & Nexus Transition plans

Actionable «Stakeholder language» information for PRIMA CoP





## [WP2] WEFE Nexus Vision and Transition plan (RRI)



- **RRI Master Class for NEXUS-NESS partners**
- **Initiate the NELs RRI/Transition Workshops**
- **Organize and execute the RRI Roadmap**

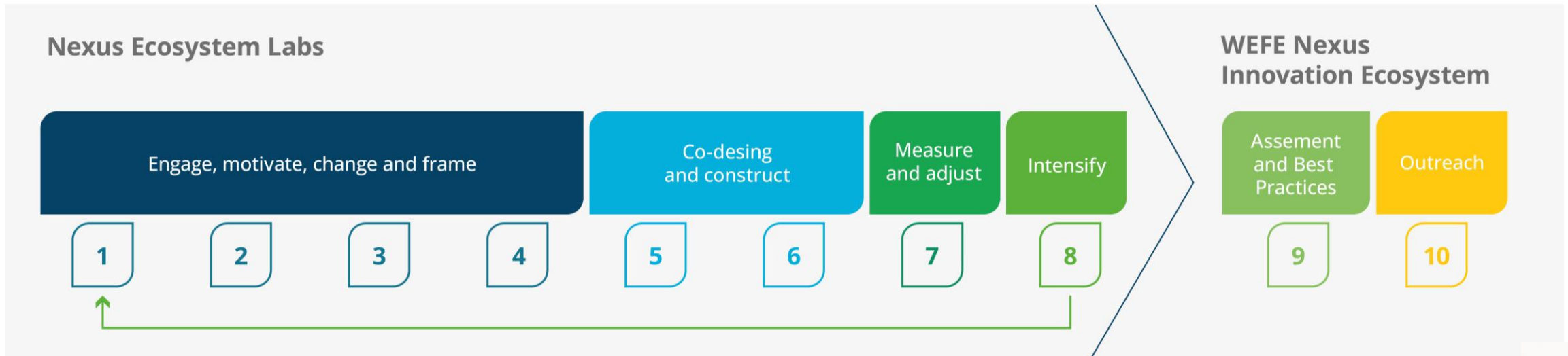
### WP2 WEFE Nexus Transition through Innovation Ecosystem Approach

Task 2.1 NEL Innovation Ecosystem Approach and Training

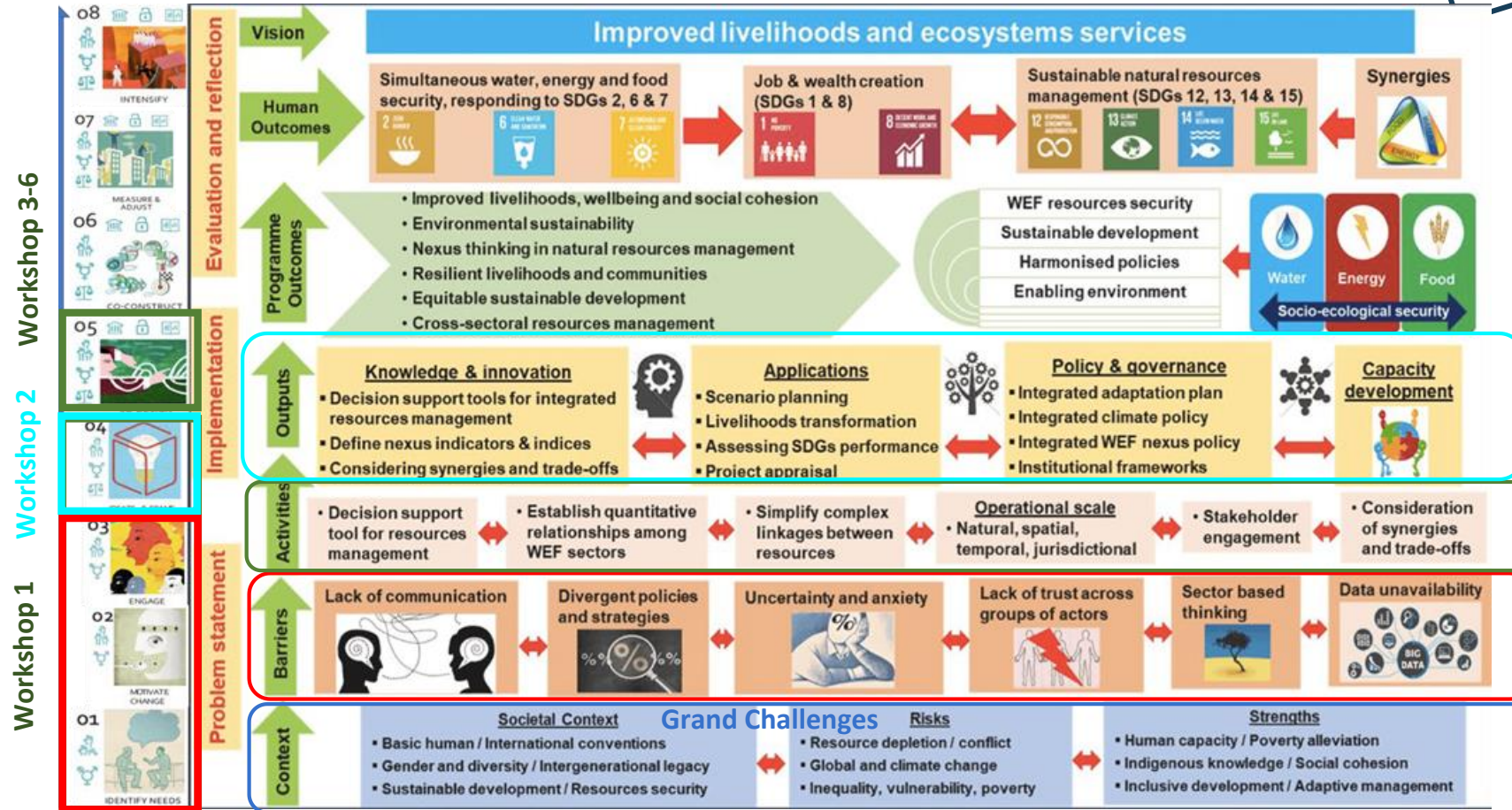
Task 2.2 Applying the NEL Innovation Ecosystem

Task 2.3 Integrating gender dimension into NEL Innovation Ecosystem

Task 2.4 Multi-stakeholder and User Platform (MSUP)



## WEFE Nexus Vision and Transition plan (RRI)



## Integrating gender dimension into NEL Innovation Ecosystem



- Analysis of the **Gender Surveys** administrated during the first workshop in the NELs



- **Literature review** of the existing sex-disaggregated indicators in the **Water**, **Energy**, **Food** and **Ecosystem** sectors



- Development of a **Gender Dimension Training Course**



- Implementation of the **2 - module training course**



Gender dimension in the Water-Energy-Food and Ecosystem nexus



# NEXUS Nature Ecosystem Society Solution 2021-2024

Workshop | Promoting Gender Equality in R&I Projects to Drive the Mediterranean's Green Transition – June 6<sup>th</sup>, 2023



## NEL Workshop Flyers

**ACQUA** **ENERGIA**

**AGRICOLTURA** **AMBIENTE**

Insieme possiamo affrontare le sfide e sviluppare soluzioni sostenibili per immaginare il futuro della Val di Cornia nel 2030.

Segui il Nexus Ecosystem Lab della Val di Cornia e fai la differenza!

**NEXUS ECOSYSTEM LAB** **CENTRO DI RICERCA PRODUZIONI VEGETALI Sani'Anna**

### SEGUI IL NEXUS ECOSYSTEM LAB DELLA VAL DI CORNIA

La diminuzione di disponibilità della risorsa idrica ed il suo peggioramento qualitativo, l'aumento del costo dell'energia e dei fertilizzanti metteranno a rischio negli anni a venire lo sviluppo del settore agricolo ed in particolare colture di pregio come le orticole, l'olivo e la vite. Occorre trovare soluzioni sostenibili per favorire lo sviluppo del settore socio-economico ed allo stesso tempo migliorare la qualità dell'ambiente che ci circonda basandoci possibilmente su soluzioni che vadano a replicare quanto avviene in natura (nature-based solutions). In questo contesto è importante procedere ad una pianificazione e gestione congiunta delle risorse poiché è ben chiaro che la gestione unidirezionale di una risorsa riverbera i suoi effetti sulle altre.

**AGUA ESCASA** **ENERGÍA CARA**

**FERTILIZANTES CAROS** **PUEBLOS VACIADOS**

Juntos podemos abordar estos problemas y desarrollar soluciones sostenibles.

Únete al Nexus Ecosystem Lab y marca la diferencia

**NEXUS ECOSYSTEM LAB** **POLITÉCNICA**

### CREA EL CAMBIO QUE NECESITAS. ÚNETE AL NEXUS ECOSYSTEM LAB

NEXUS-NESS ofrece la oportunidad de compartir tus inquietudes, conocimientos e ideas para promover el cambio y la innovación en un taller dedicado a la aprendizaje mutuo y movilización. Los regantes, confederación hidrográfica del Duero, ITACYL, empresas agrícolas locales, suministradores de energía, autoridades locales y regionales, así como otras instituciones/ asociaciones interesadas están invitados a participar.

Juntos debatiremos y acordaremos un plan práctico e innovador para:

**الصراعات** **هجرة سكان الريف**

**ندرة المياه** **ارتفاع في احتياجات الطاقة**

معاً يمكننا معالجة هذه المشاكل ووضع حلول مستدامة

انضم إلى المختبر البيئي Nexus واصنع الفرق

**NEXUS ECOSYSTEM LAB** **التربية الفنية**

### اخلق التغيير الذي تحتاجه انضم إلى مختبر النظم البيئية Nexus

NEXUS-NESS يمنحك الفرصة لشراكة امتصاصك ومعرفتك وأفكارك للتغيير والابتكار في ورشة عمل للتعلم المتبادل، ويسمعي للمشاركة كل من الفزارعين، والسلطات الجهوية والمحلية، والمؤسسات العامة، وتعاونيات الفزارعين، ومدربي المياه وغيرهم من أصحاب المصلحة المحليين. معاً، سنناقش ونطور خطة عمل مبتكرة وفعالة حول:



**ندرة المياه واستخدامها** **استخدام الطاقة الجديدة**

**زيادة الانتاج الزراعي**

معاً يمكننا معالجة هذه المشاكل وتطوير حلول مستدامة

انضم إلى المختبر البيئي NEXUS-NESS واصنع الفرق

**NEXUS ECOSYSTEM LAB** **معا نمنع الفرق**

### اخلق التغيير الذي تحتاجه انضم إلى مختبر النظم البيئية NEXUS-NESS

NEXUS-NESS يمنحك الفرصة لشراكة امتصاصك ومعرفتك وأفكارك للتغيير والابتكار في ورشة عمل للتعلم المتبادل، ويسمعي إلى المشاركة كل من مستخدمي المياه، ومدربي المياه، ومدربي الطاقة، والجمعيات الزراعية، والفزارعين، والسلطات المحلية، وغيرهم من أصحاب المصلحة المحليين.



## [WP3] Nexus Ecosystem Labs for Nexus-Ness Service operationalization



- **NEXUS-NESS NELs for NNS co-design and implementation**
- **NEL Grand Challenges and data/indicators for WEF Nexus scenarios**
- **Capacity building and NEXUS-NESS operationalization**

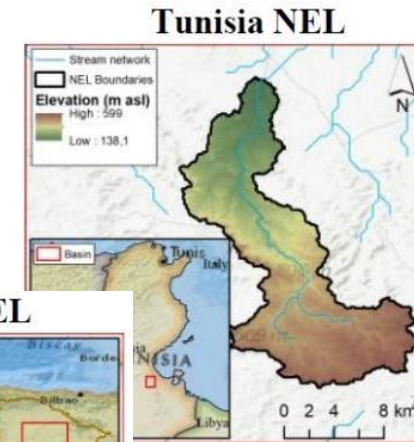
### WP3 Nexus Ecosystem Labs for Nexus Ness Service operationalization

Task 3.1 Nexus Ecosystem Labs:  
3.1.1 Italy, 3.1.2 Spain,  
3.1.3 Tunisia, 3.1.4 Egypt

Task 3.2 Nexus  
Ness Service  
validation

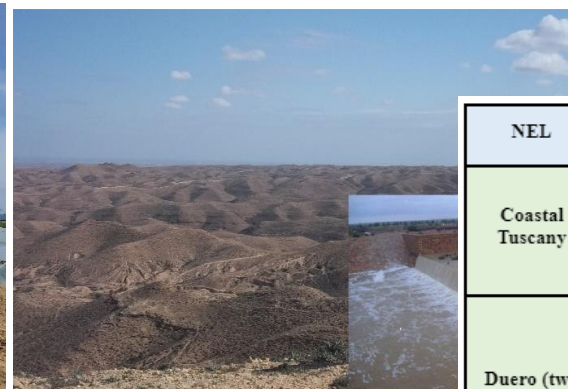
Task 3.3  
WEFE Nexus  
indicators

Task 3.4  
Pathways to  
impact and  
capacity  
development





## The four NEL & the Nexus Grand Challenges



Italy

Tunisia



Spain

Egypt

NEL	Country	Investigated area (Km <sup>2</sup> )	Major Cities	N. of Inhabitants	Major water source	Most relevant crops	Irrigated area (ha)	Major energy source
Coastal Tuscany	Italy	600	Piombino, Campiglia Marittima, Suvereto	50000 (plus about 200000 tourist arrivals per year)	Groundwater, Harvested rainwater, Reclaimed wastewater	Vineyards, Olive trees, Winter cereals, Artichokes, Horticultural crops	1400	Fossil fuels, Geothermal, Solar and Wind
Duero (two units, CEA and T)	Spain	CEA: 5000 T: 7500	CEA: Segovia/Ávila T: Zamora	CEA: 288000 T: 138420	Surface water (reservoirs) and groundwater	Cereals, Horticultural crops	CEA: 8822 T: 9106	Fossil fuels, Solar, Hydroelectric
Wadi Jir	Tunisia	155	Matmata, New Matmata	18000	Surface water, Harvested rainwater	Olive/Fig/Almond trees, Legumes, Barley, Wheat	900	Fossil fuels
Wadi Nagamish	Egypt	105	El-Garawla Village	3000	Harvested rainwater, Groundwater, Reclaimed wastewater	Fig, Olive, Almonds trees, Barley, Wheat, Tomatoes, Woody crops	210	Fossil fuels





## NEL Booklet for Grand Challenges

### The Coastal Tuscany NEL (Italy)

*Exploring innovative ways for conjunctive use of surface water groundwater and non-conventional waters to boost agricultural production, improve environmental quality, reduce energy consumption, and adapt to and mitigate climate changes*



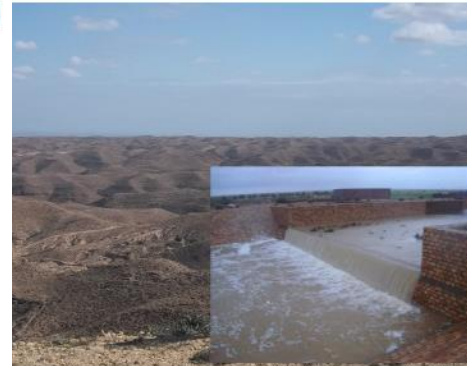
### The Duero hydrological management units Cega-Eresma-Adaja and Tordesillas-Toro (Spain)

*Looking forward to water and food security based on RRI approaches on WEFE NEXUS.*



### The Wadi Jir NEL (Tunisia)

*Towards an efficient allocation of scarce natural resources in arid environments of southeastern Tunisia through adopting Nexus approach*



### The Wadi Naghamish NEL (Egypt)

*Fair and Sustainable Resource Allocation Demonstrator of the Multiple WEFE Nexus Economic, Social and Environmental Benefits for Mediterranean Regions*





## NEL Capacity Building

The capacity building strategy aims at identifying the proper set of activities needed to improve the skills of **project partners and stakeholders in dealing with Nexus related problems** assuring the **understanding the significance of WEFE Nexus** and that **application of the NEXUS-NESS solution is fully achieved.**

Who?

What?  
?



The CB strategy is based on the **“training for trainers” approach** where the initial training of the partners involved in the NELs activities will serve as a basis for building capacities at NEL and national level in further phases of this project

How?





## NEL Capacity Building – ToT Schedule

Topic	Subtopic
1. Nexus Introduction	Innovation Ecosystem Approach ✓
	Gender training ✓
	Understanding the WEFE Nexus
2. Nexus Modelling	FREEWAT
	WATNEEDS
	Cost-Benefit analysis
	Multi-Stakeholder and User-Platform (MSUP)
	Introduction to indicators
3. Nexus Implementation measurement and diffusion	Datasets used to implement the indicators



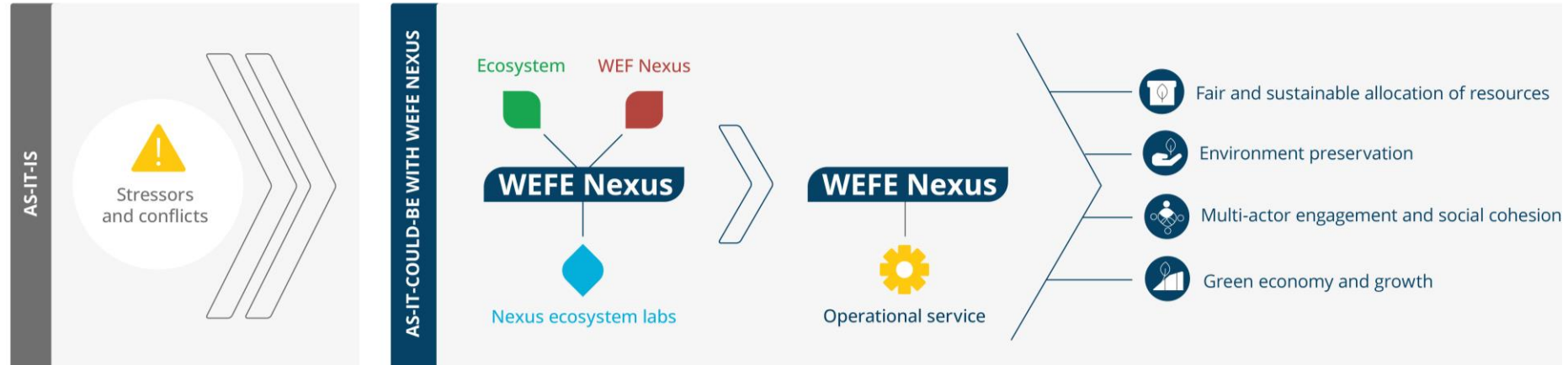
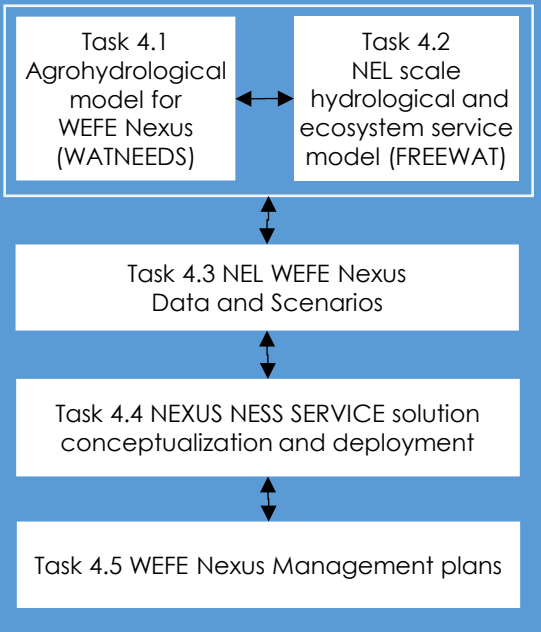


## [WP4] Nexus Ness Service deployment and WEF Nexus Management Plans



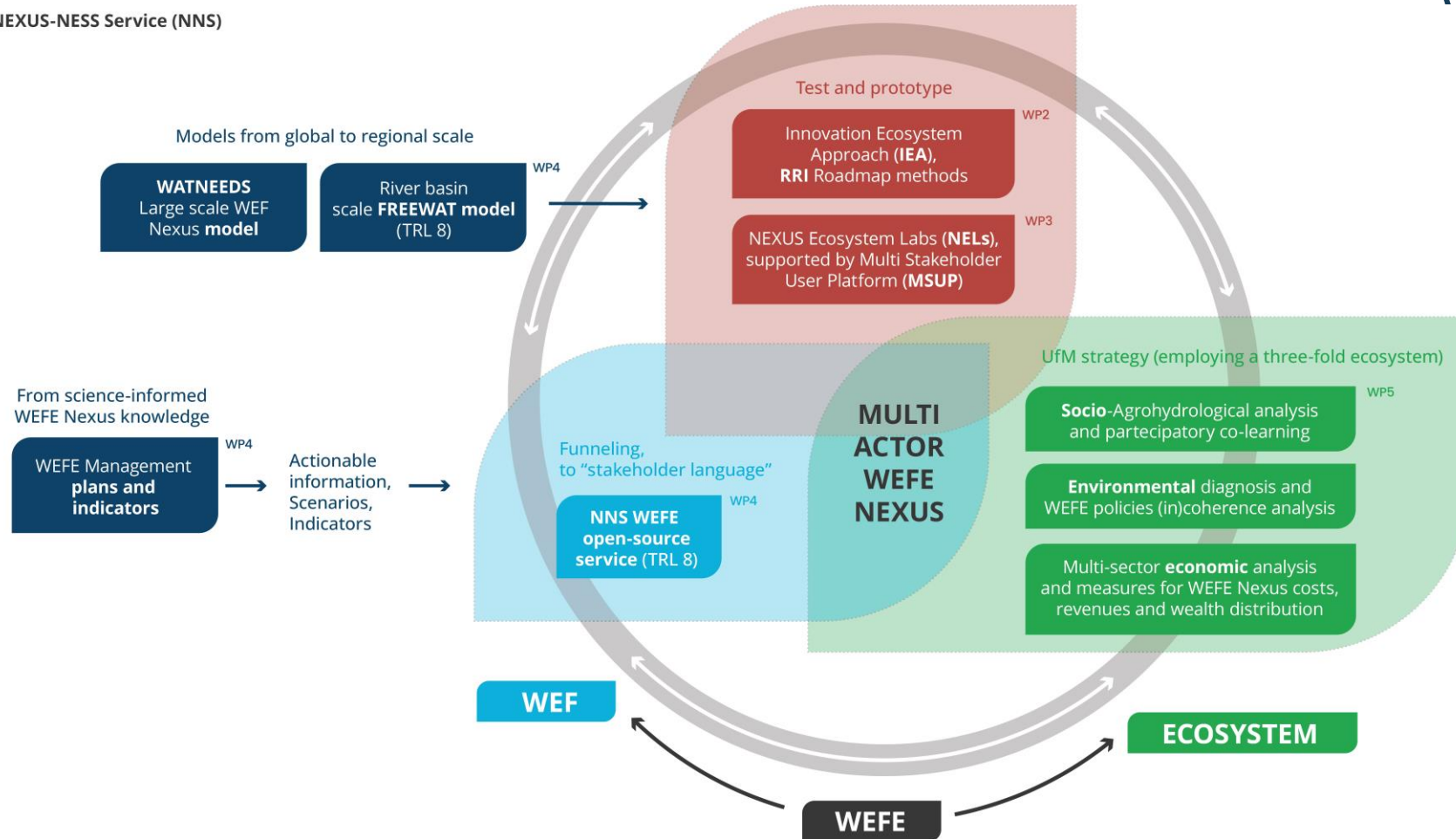
- **NEL-driven NEXUS-NESS Scenarios employing WEF Nexus Bio-Physical models**
- **NEL Grand Challenges translated into actionable «stakeholder language» information by means of data/indicators**
- **NEXUS-NESS web service to deploy, engage and communicate with CoP**
- **WEF Nexus Management Plans**

### WP4 Nexus Ness Service deployment and WEF Nexus management plans

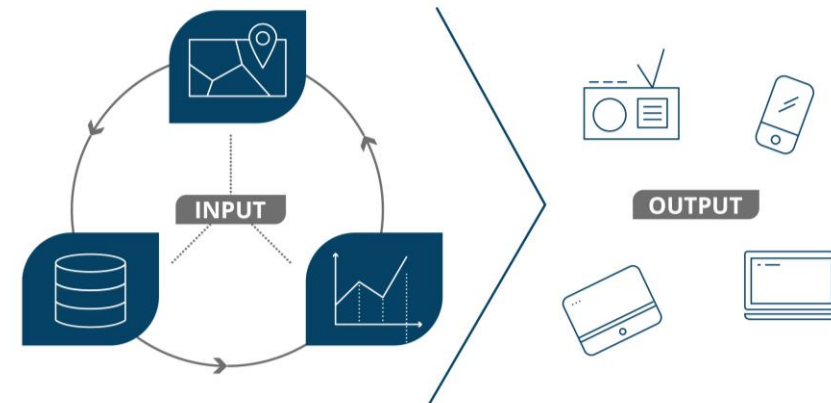
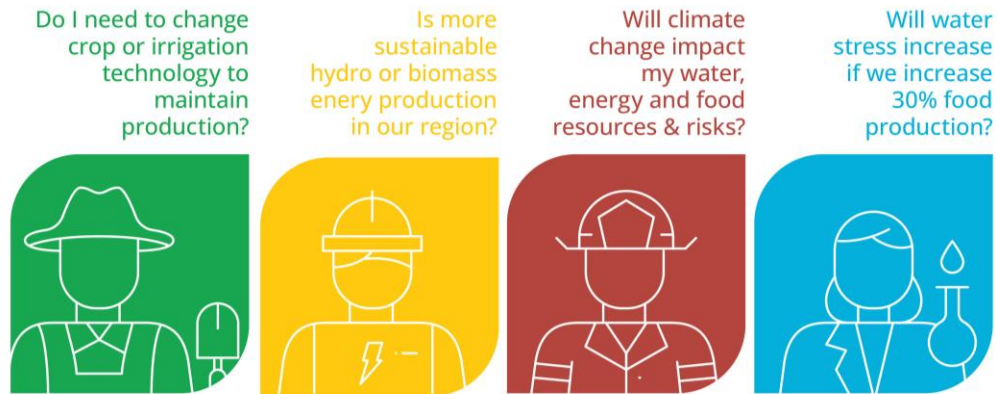
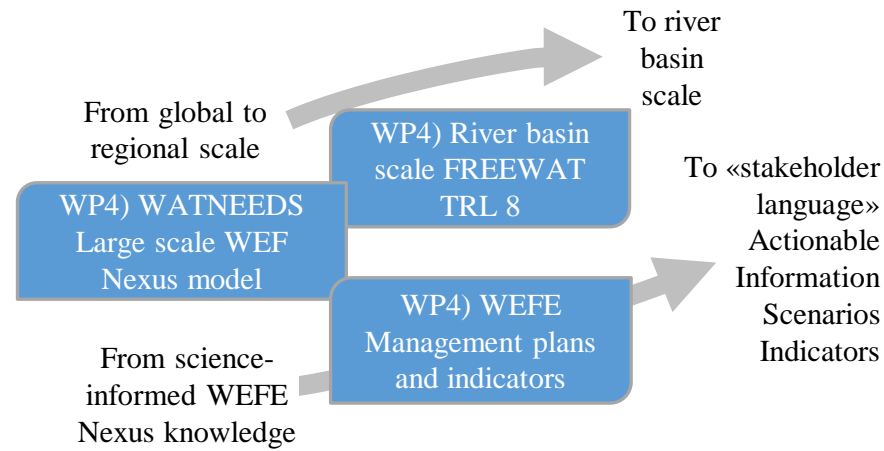


## Nexus Ness Service deployment and WEFE Nexus Management Plans

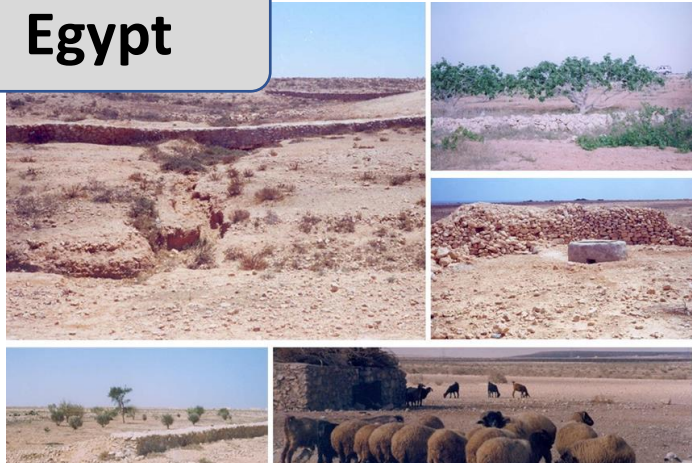
NEXUS-NESS Service (NNS)



## NEXUS-NESS Scenarios derived from WEFE Nexus Bio-Physical models



## Egypt



## Tunisia



WEFE Nexus mainstreaming means working with/for **PEOPLE** and **NATURE (CoP)**  
WEFE components as **ONE** because Nature is **ONE**



## Italy



## Spain





# NEXUS Nature Ecosystem Society Solution 2021-2024

Workshop | Promoting Gender Equality in R&I Projects to Drive the Mediterranean's Green Transition – June 6<sup>th</sup>, 2023



WEFE Nexus mainstreaming means working with/for **PEOPLE** and **NATURE (CoP)**  
WEFE components as **ONE** because Nature is **ONE**



<https://prima-nexus-ness.org>





<https://prima-nexus-ness.org/>



<https://www.linkedin.com/showcase/prima-nexusness/>



<https://www.facebook.com/PRIMA.Nexus.Ness/>



[https://twitter.com/nexusness\\_prima](https://twitter.com/nexusness_prima)

**Project Coordinator: Fernando Nardi**

WARREDOC Università per Stranieri di Perugia - Perugia

[warredoc@unistrapg.it](mailto:warredoc@unistrapg.it)

<https://warredoc-unistrapg.org/>

