



Section 1 2023

NEXUS Water-Energy-Food- Ecosystems

Ali RHOUMA
Project Officer

@PRIMAPROGRAM

#PRIMAInfoday



PRIMA
PARTNERSHIP FOR RESEARCH AND INNOVATION
IN THE MEDITERRANEAN AREA



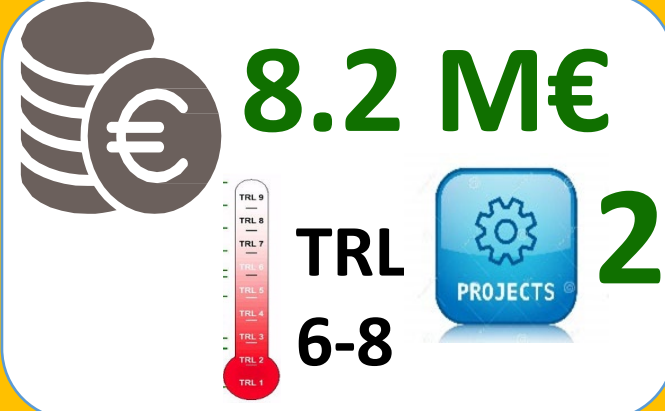
PRIMA is supported under Horizon 2020,
the European Union's Framework
Programme
for Research and Innovation



Calls 2023 W.E.F.E Nexus Topics

Topic 1.4.1 (IA)

Accelerate adaptation and mitigation to climate change in the Mediterranean region by deploying WEF E nexus solutions.



8.2 M€

TRL 6-8

PROJECTS 2

The graphic contains a stack of coins with a Euro symbol, a vertical TRL scale from 1 to 9, a blue gear icon labeled 'PROJECTS', and a large number '2'.

Submission deadline Stage 1:

22/03/2023

WEFE NEXUS AWARD

Successful implementation of management practices of WEF E resources at the local or regional scale of the Mediterranean Region.



20000€

2

The graphic contains a stack of coins with a Euro symbol, a gold award ribbon icon, and a large number '2'.

Submission deadline : 22/05/2023

Nexus WEFE Calls

Previous Calls



Biophysical state

Socio-economic impact

2019

2020

2021

2022

RIA Assessing social, technical and economic benefits of a cross-sectoral governance of the Water-Ecosystems-Food Nexus.

IA. Demonstrating benefits of the Water-Ecosystem-Food Nexus approach in delivering optimal economic development, achieving high level of environmental protection and ensuring fair access to natural resource

IA Leveraging knowledge on the Nexus management of Water-Energy Food-Ecosystems resources in the Mediterranean region: from **concepts to practical solutions**

IA Predicting and testing options of **socio-economic adaptation** to declining Water-Energy-Food-Ecosystem (WEFE) resources in the Mediterranean Region

Call 2023

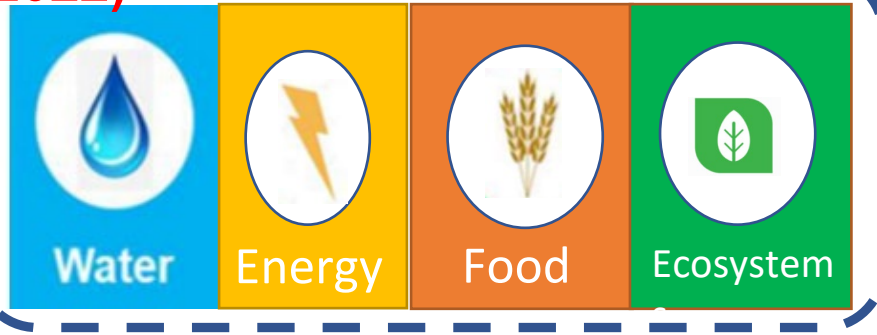


Nexus WEFE based adaptation and mitigation to Climate change

CHALLENGE

Climate Change

Extreme weather events (IPCC, 2022)



Increase vulnerability

Sectoral adaptation strategies

- Climate Change adaptation strategies
- Policies, Governance

Reduce vulnerability of Climate Change

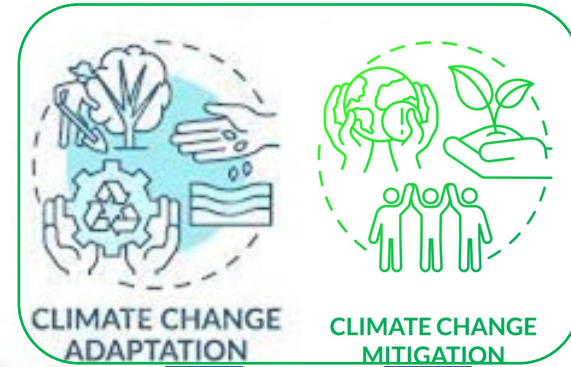
Mal-adaptation



Land degradation



migration

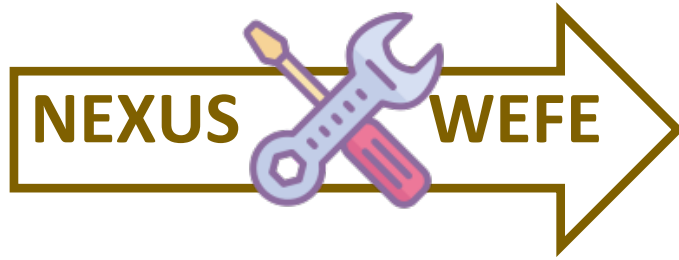


Integrated Management of Resources

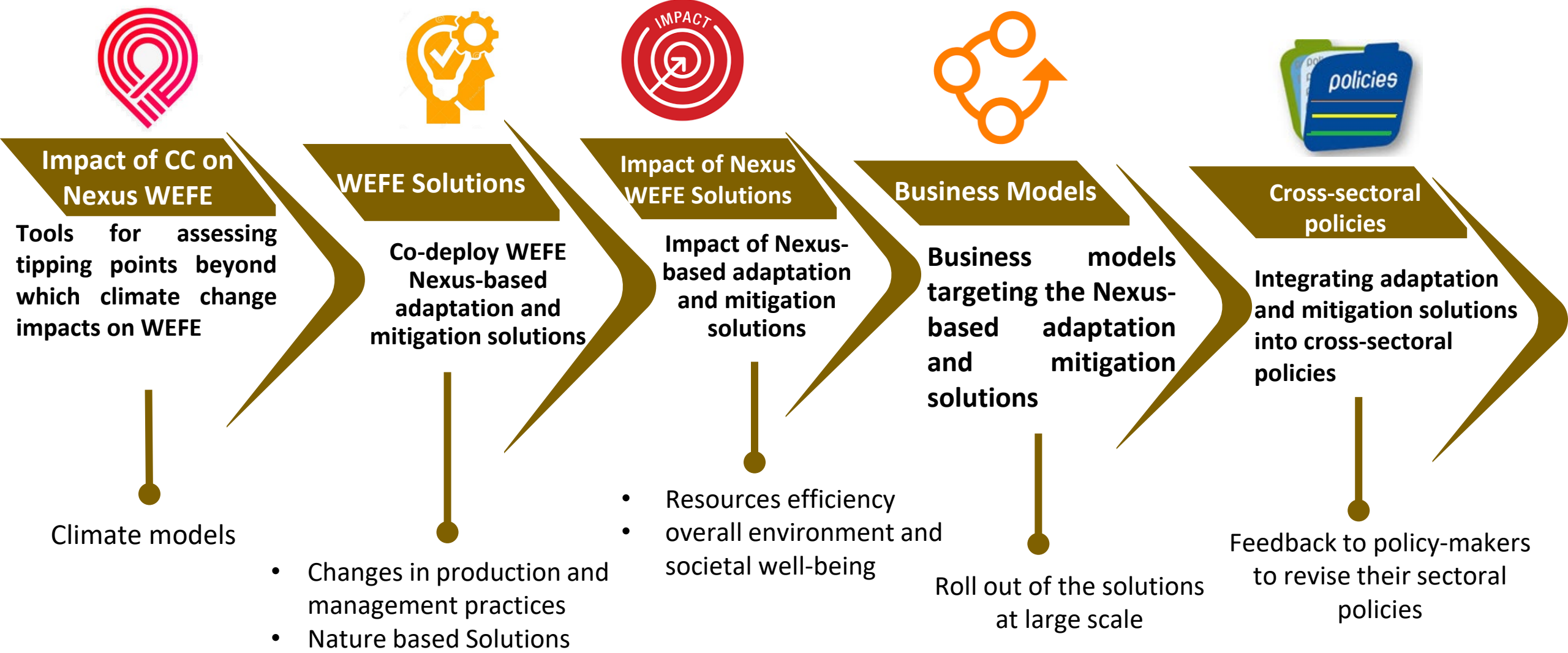
+

Governance of Resources

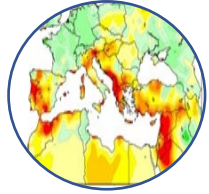
SCOPE



Climate Adaptation and Mitigation strategies



SCOPE: Particular attention



Large scale demonstrations sites

Ovoid small scale demonstration sites/Pilots



Funded Projects

Lessons learned from the Nexus projects by developing a close partnership during the implementation



Stakeholders engagement

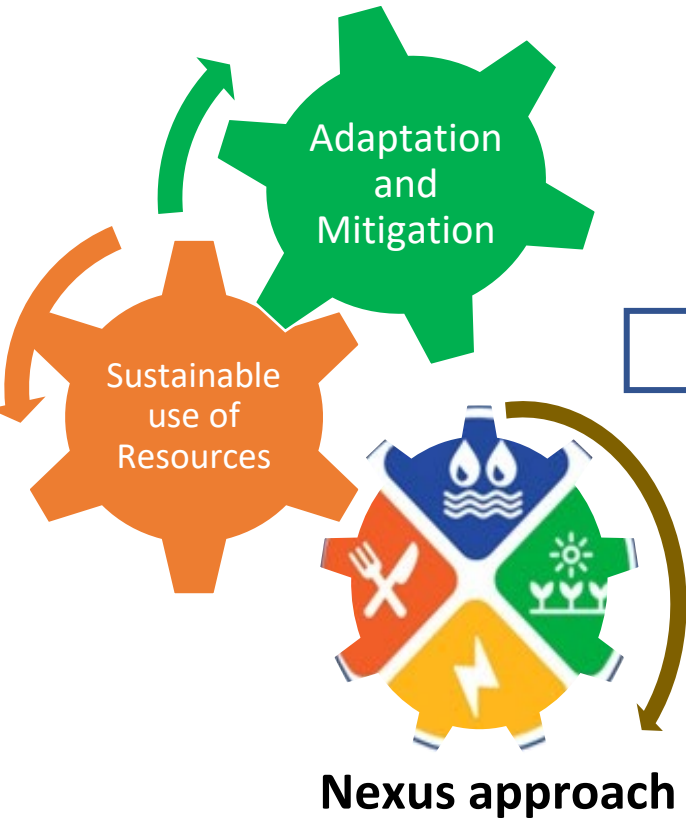
Encourage participation of stakeholders in the planning, implementation, and monitoring of WEFE nexus solutions



Links with PRIMA WEFE Community of Practice

Cross-organization collaboration and knowledge sharing

Expected Impacts



Integration of Nexus perspectives

- Adaptation Plans
- Climate Policy



Economy efficiency

- Produce more with Less
- Improve the livelihood



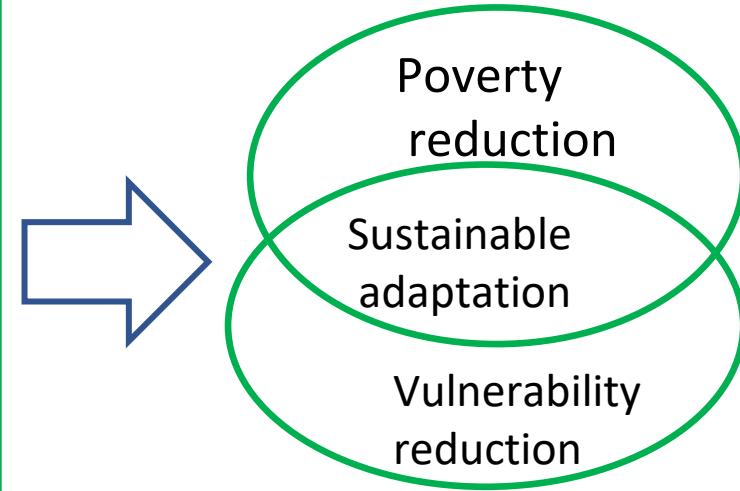
Social equity

- 3 Securities (Water, Energy, food)



Environmental sustainability

- Sustainable Ecosystems services



Key Performance Indicators



Number of Nexus-based adaptation and mitigation solutions able to minimize shock, risks, and vulnerability and address impacts and risks associated with climate change



Number of engaged stakeholders and end-users



Number of business models of Nexus-based adaptation and mitigation solutions developed

Links with SDGs



6.4. substantially increase water-use efficiency across all sectors



7.2. increase substantially the share of renewable energy in the global energy mix
7.3. improvement in energy efficiency



2.1. End hunger and ensure access by all people
2.4. ensure sustainable food production systems and implement resilient agricultural practices



12.2. sustainable management and efficient use of natural resources
12.5. Reduce waste generation through prevention, reduction, recycling and reuse



13.1. Strengthen resilience and adaptive capacity to climate-related hazards and natural disasters
13.2. Integrate climate change measures into national policies, strategies and planning



15.1. conservation, restoration and sustainable use of terrestrial and inland freshwater ecosystems and their services
15.3. combat desertification, restore degraded land and soil, including land affected by desertification, drought and floods

LINKS WITH EU POLICIES, THE MISSION AND PARTNERSHIPS



- European Climate Law
- EU Adaptation Strategy
- Farm to Fork Strategy



Water Framework Directive



H. Mission Adaptation to Climate Change



WEFE NEXUS AWARD



Demonstrate the socio-economic benefits of the proposed WEFE solutions



Demonstrate that the proposed WEFE solutions have been adopted by the end-users

(in particular policy makers)



Demonstrate the replication and upscaling of the proposed WEFE solutions



PRIMA

PARTNERSHIP FOR RESEARCH AND INNOVATION
IN THE MEDITERRANEAN AREA

Thank you...



Prima Program



Prima Program
Mediterranean Partnership
@PrimaProgram



PRIMA Programme



Prima-med YouTube



prima_foundation_med