

NEXUS Water Energy Food Ecosystems

Prof. Ali RHOUMA
Project Officer
PRIMA Foundation

@PRIMAPROGRAM #PRIMAInfoday



PRIMA
PARTNERSHIP FOR RESEARCH AND INNOVATION
IN THE MEDITERRANEAN AREA

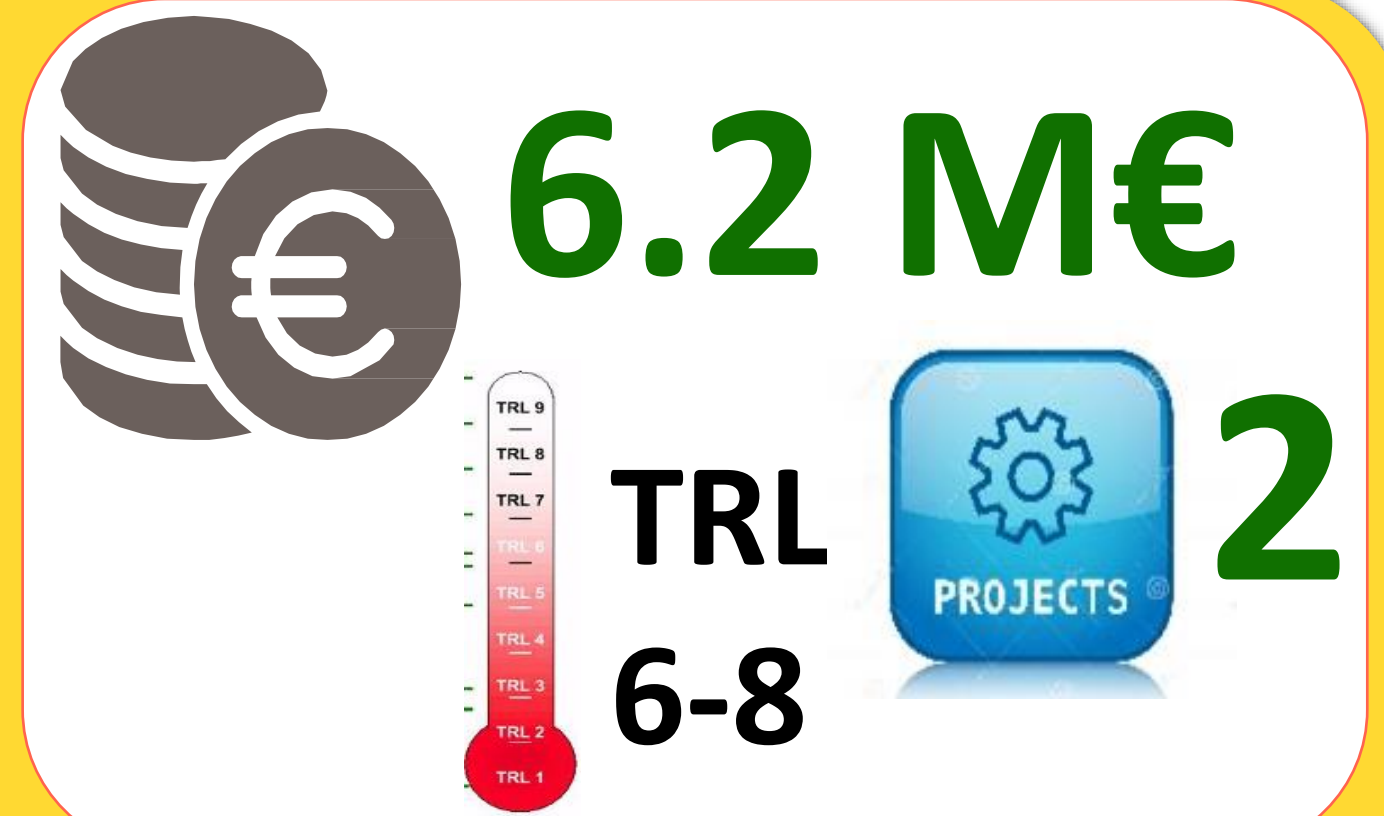


PRIMA is supported under Horizon 2020,
the European Union's Framework
Programme
for Research and Innovation

Call 2022 W.E.F.E Nexus Topics

Topic 1.4.1 (IA)

Predicting and testing options of socio-economic adaptation to declining Water-Energy-Food-Ecosystem (WEFE) resources in the Mediterranean Region



Topic 1.4.2 (CSA)

Development of a Mediterranean Water-Energy-Food-Ecosystem (WEFE) Community of Practice



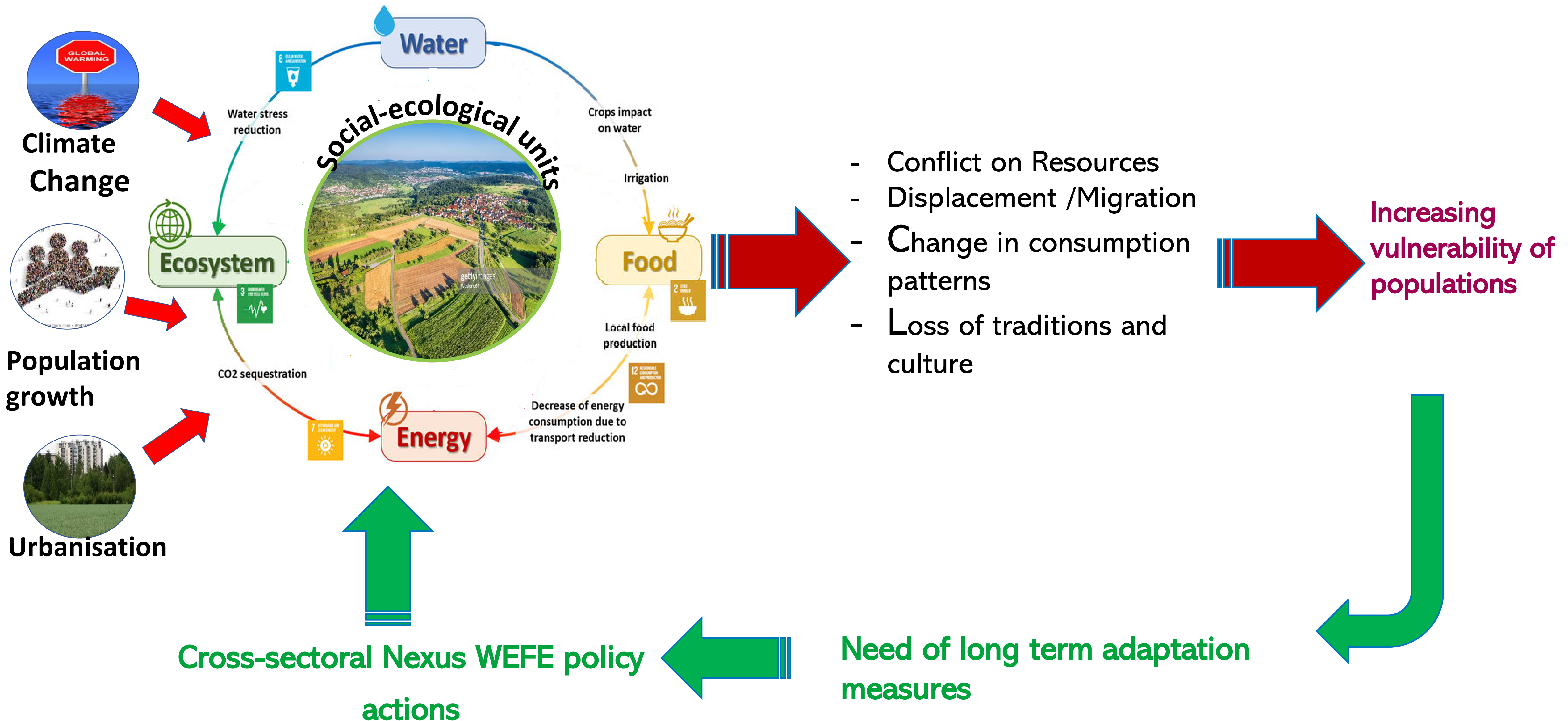
WEFE NEXUS AWARD

Successful implementation of management practices of WEFE resources at the local or regional scale of the Mediterranean Region.



Challenge

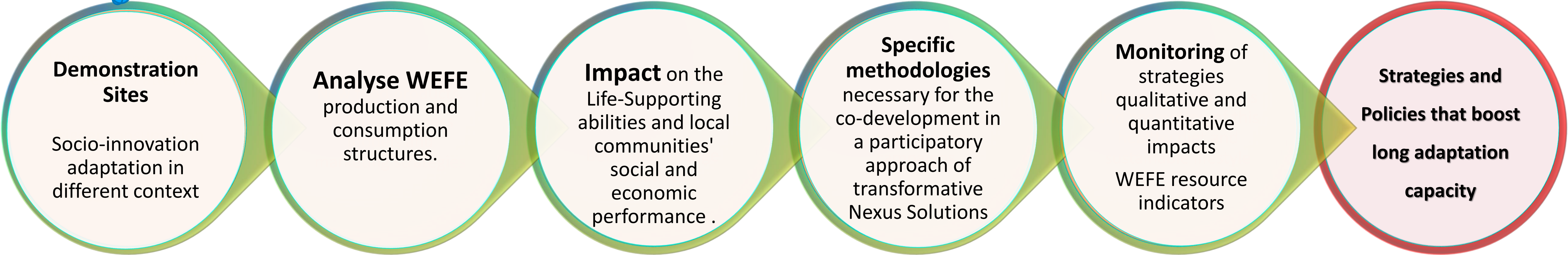
Topic 1.4.1-2022 (IA): Predicting and testing options of socio-economic adaptation to declining WEFE resources in the Med. Region



SCOPE



- Go beyond an assessment of biophysical state
- In 2022, the focus is enlarged to address the Socio-economic impacts of the Nexus approach



Stakeholder Involvement



EXPECTED IMPACTS



Increase resilience to climate change, ensuring good quantitative and qualitative status of water, sustainable agriculture, food and energy production, and healthy ecosystems



Integration of Nexus considerations into public and business decision-making at different governance levels



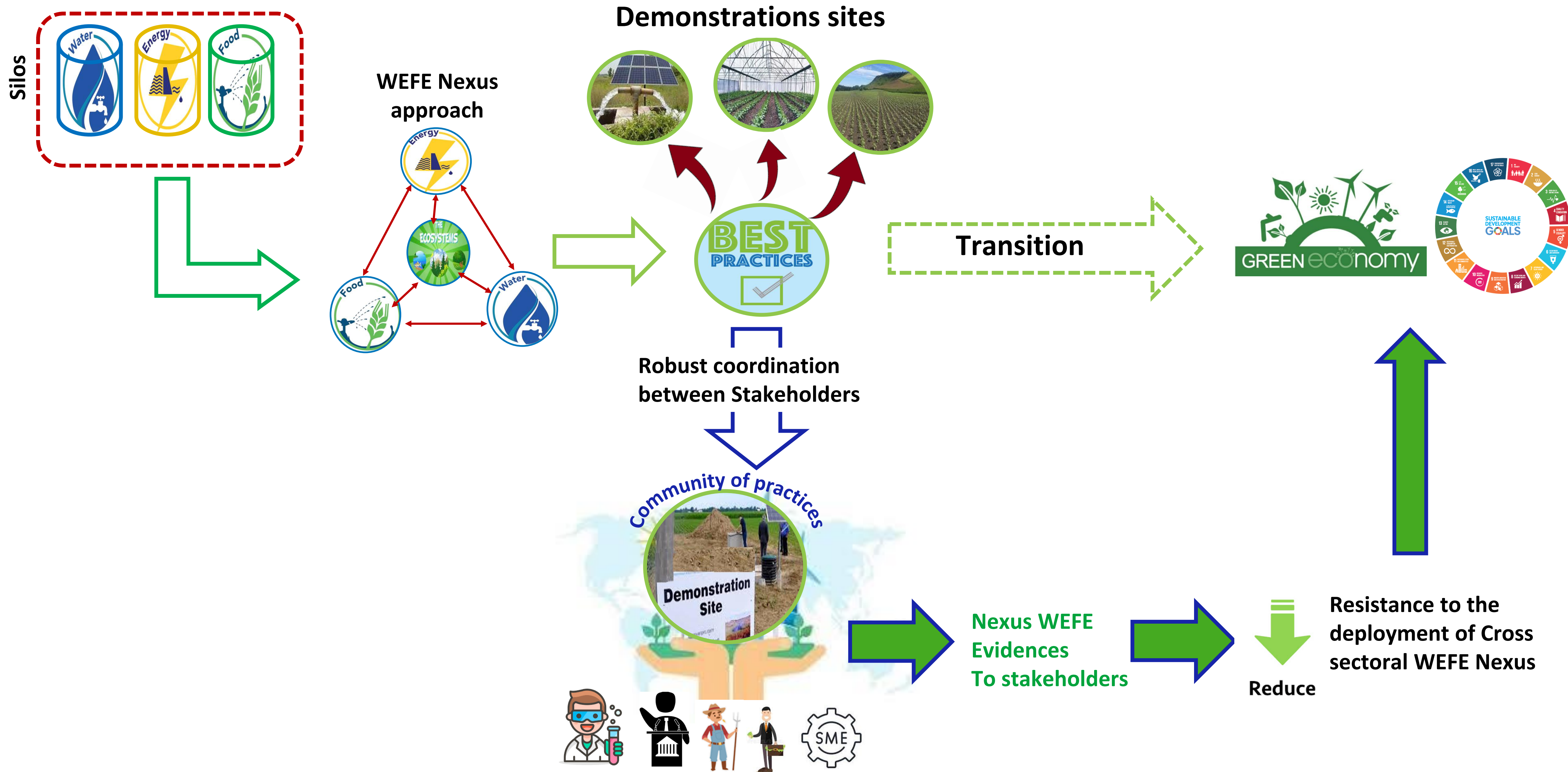
Increase the socio-economic livelihood conditions of vulnerable populations



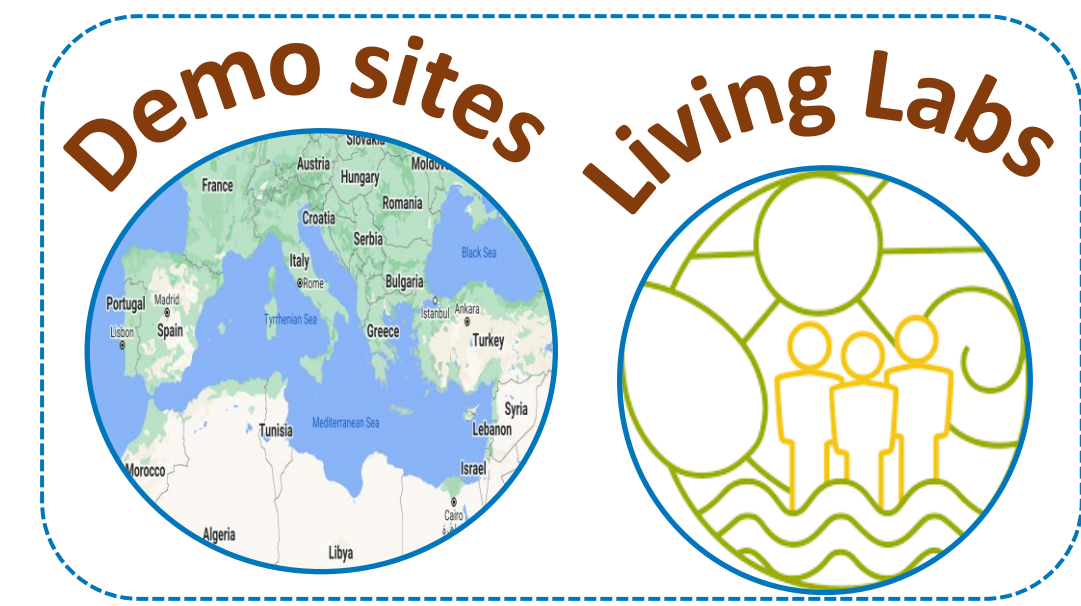
Share best Nexus practices across disciplinary silos in a context of combined natural, economic and social systems

Challenge

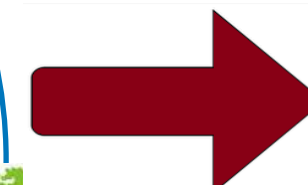
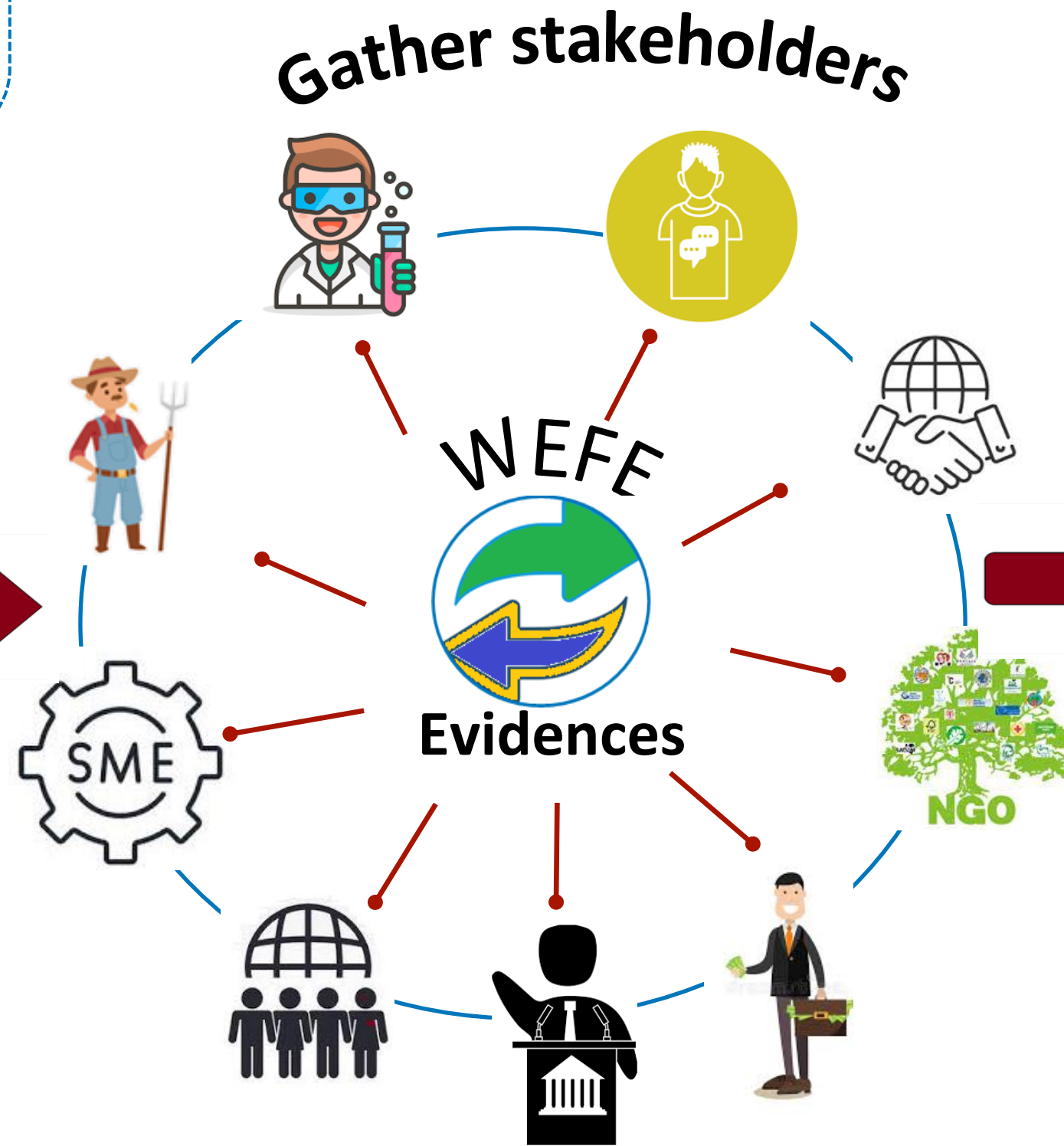
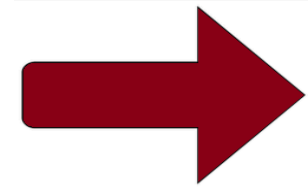
Topic 1.4.2-2022 (CSA): Development of a Mediterranean Water-Energy-Food-Ecosystem (WEFE) Community of Practice



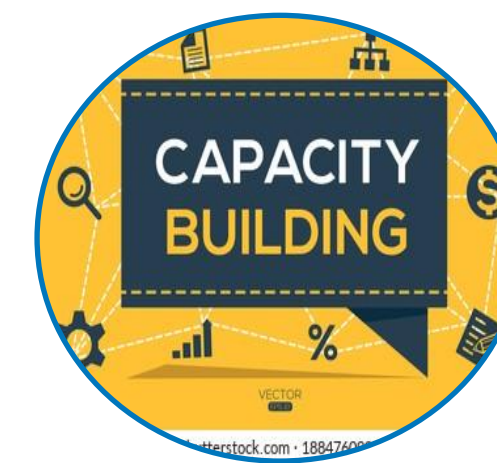
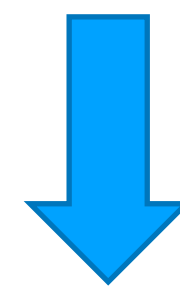
Scope



Distinctive feature of the CoP



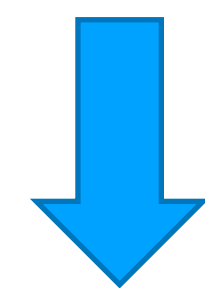
Develop



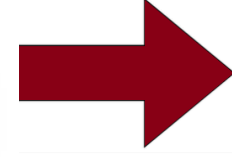
- Communications
- Outreach
- Awareness-rising campaigns



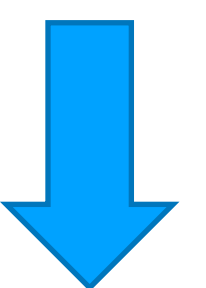
Propose



Implementation
Nexus WEFF



Engage



WEFF Policies

Synergies with other established platforms
(As an Example the Sustainable Food Systems
Multi-Stakeholder platform)

EXPECTED IMPACTS



Promote /Support the deployment of regional demonstration cases

Contribute to the development, **testing and dissemination and replication of WEF E Nexus solutions**



Foster the shift from sectoral WEF E management towards an **integrated resource-use approach** by sharing knowledge on the Nexus approach

Enable a long-lasting cooperation within and between demonstration areas

Key Performance Indicators (IA/CSA)



1. Degree of integration between water related policies (environmental, climate, agriculture) and energy policies (**IA/CSA**)



2. Number of stakeholders involved in :
- Innovative experiments (**IA**)
- The NCoP (**CSA**)



3. Number of Nexus demonstration cases :
- As socio-innovative adaptation experiments in different contexts (**IA**)
- Engaged in the NCoP (**CSA**).

Links with EU Policies and SDGs


Links with SDGs



SDG2

SDG6

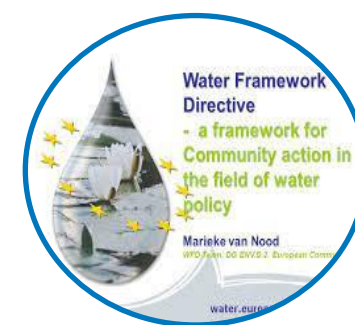
SDG7

+ Other Relevant SDGs  Relevant SDG Target

Links with EU Policies, HE Mission's and partnerships



European Green Deal



Water Forum Directive



Farm to fork strategy



Biodiversity strategy



WEFE NEXUS AWARD



Demonstrate the socio-economic benefits of the proposed WEFE solutions



Demonstrate that the proposed WEFE solutions have been adopted by the end-users (in particular policy makers)



Demonstrate the replication and upscaling potential of the proposed WEFE solutions

Thank you

@PRIMAPROGRAM #PRIMAInfoDay



PRIMA

PARTNERSHIP FOR RESEARCH AND INNOVATION
IN THE MEDITERRANEAN AREA



PRIMA is supported under
Horizon 2020, the European Union's
Framework Programme
for Research and Innovation



PrimaProgram



@PRIMAProgram



Prima Program



@prima_foundation_med



Prima-med YouTube

<https://prima-med.org/>